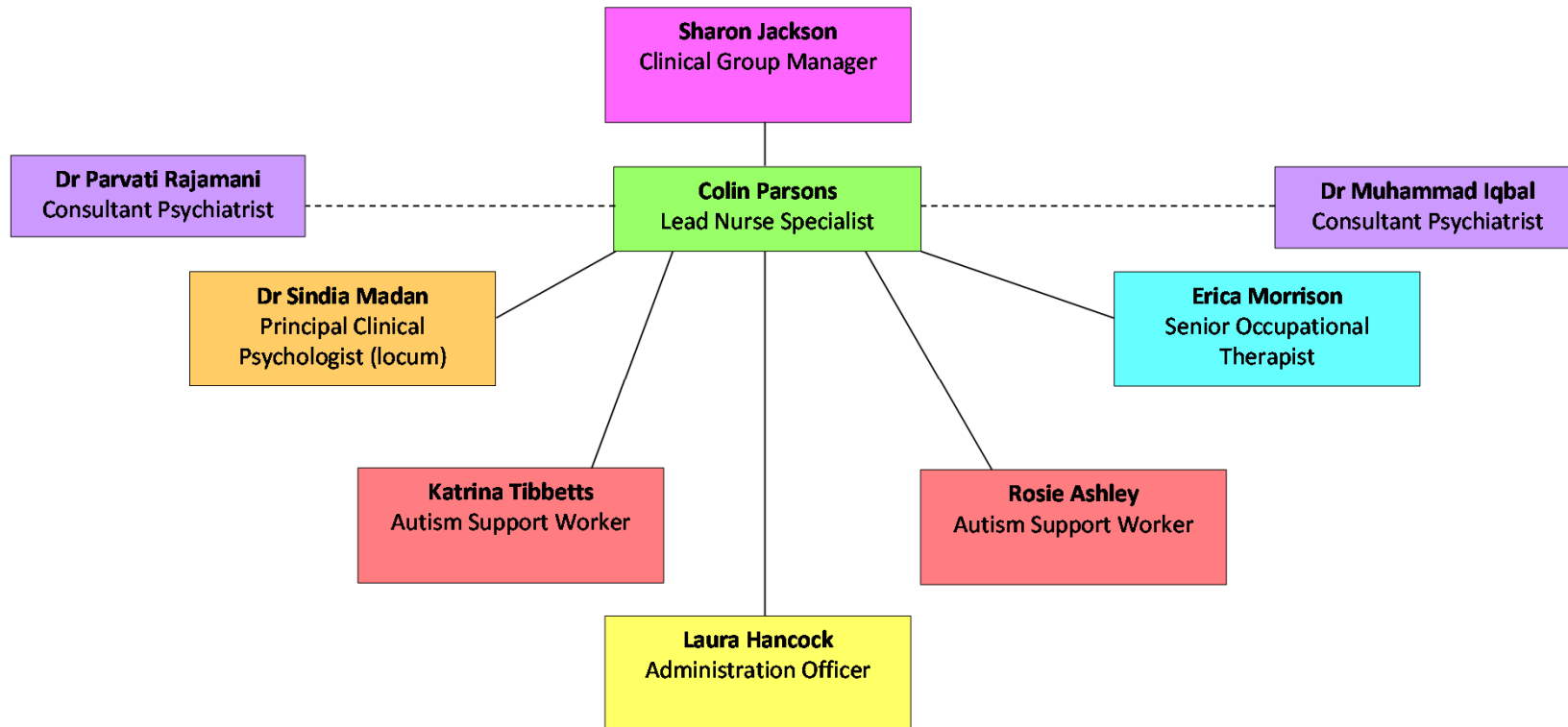


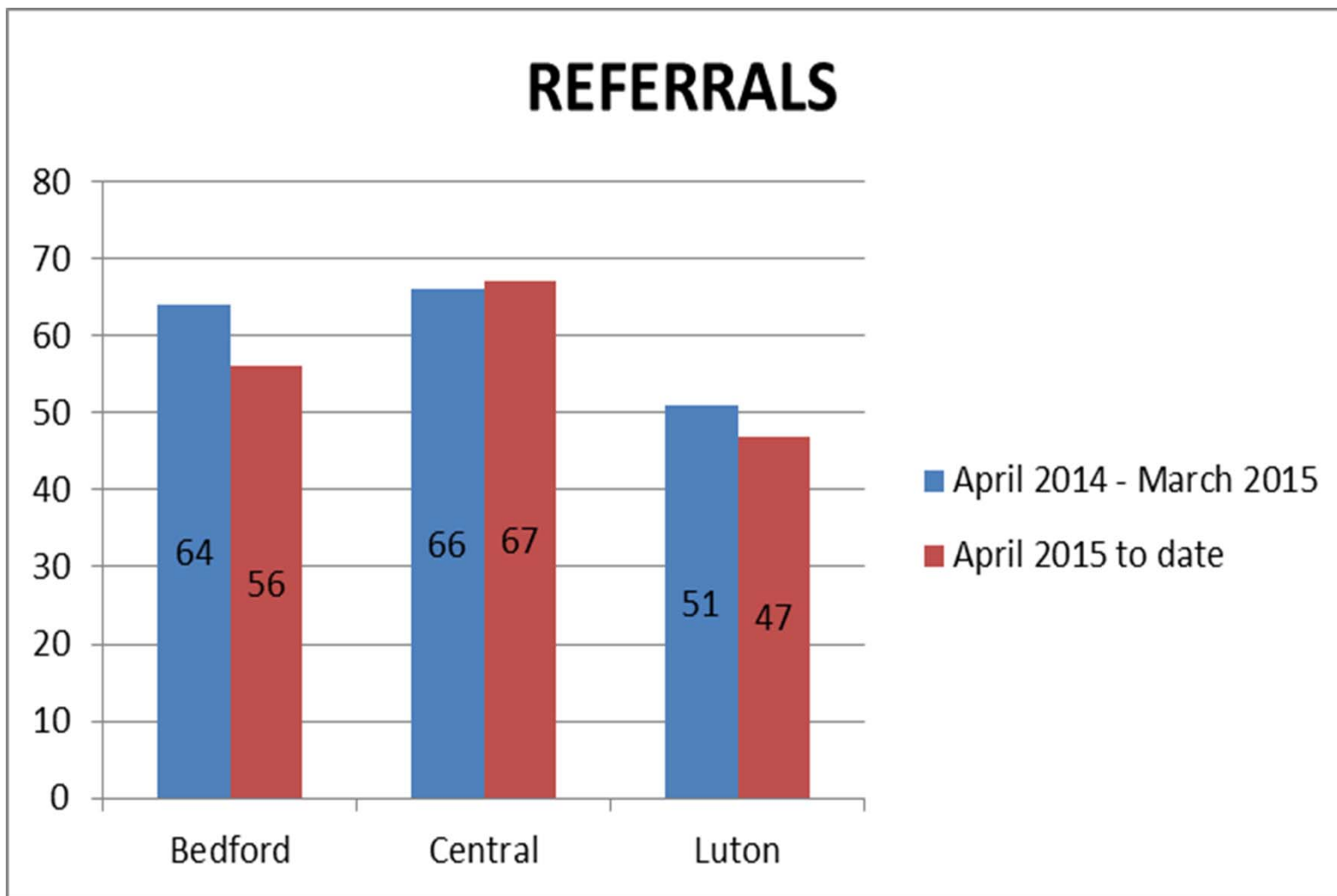
Adult Autism Service Bedfordshire and Luton

November 2015

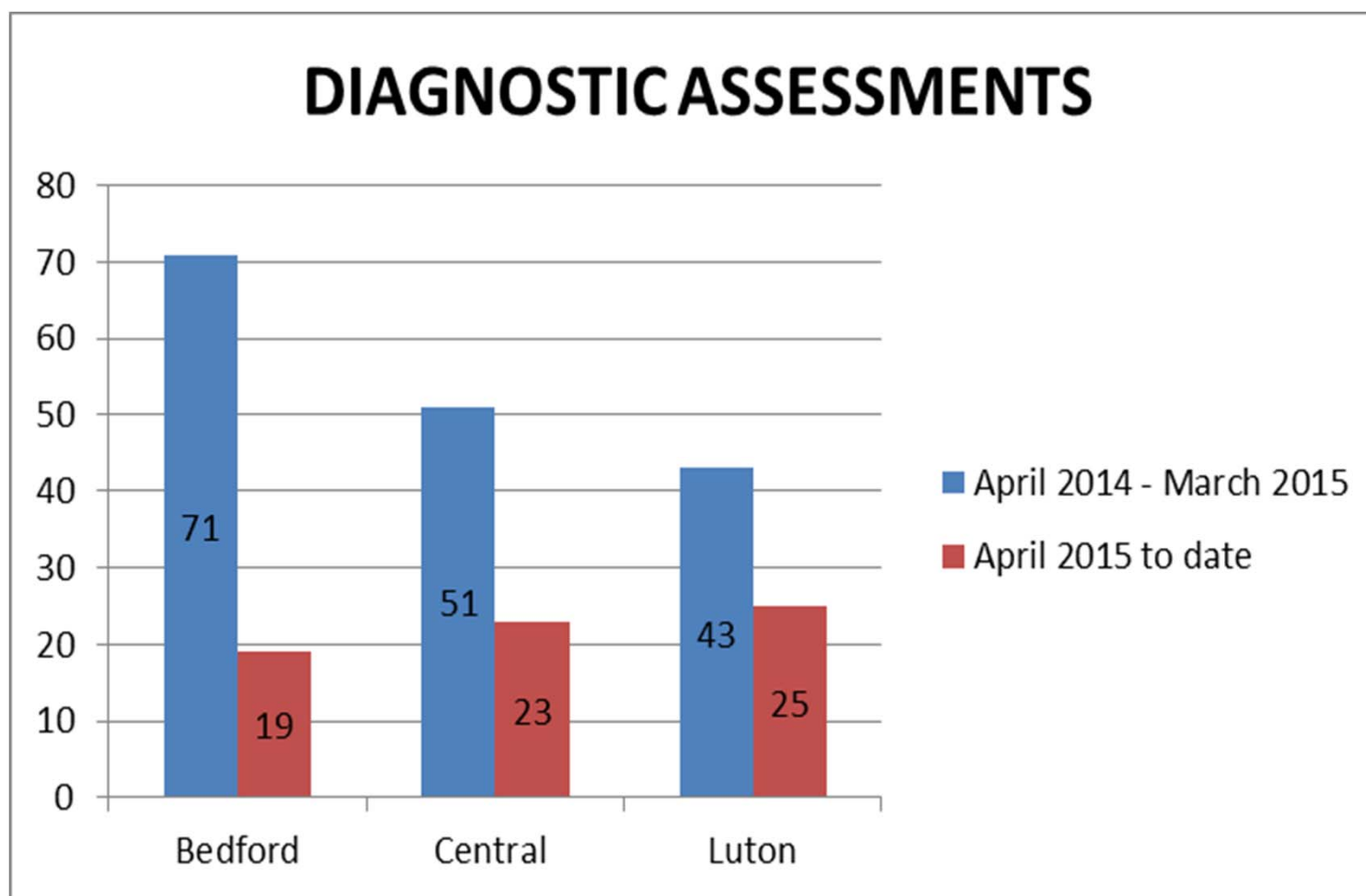
The Team



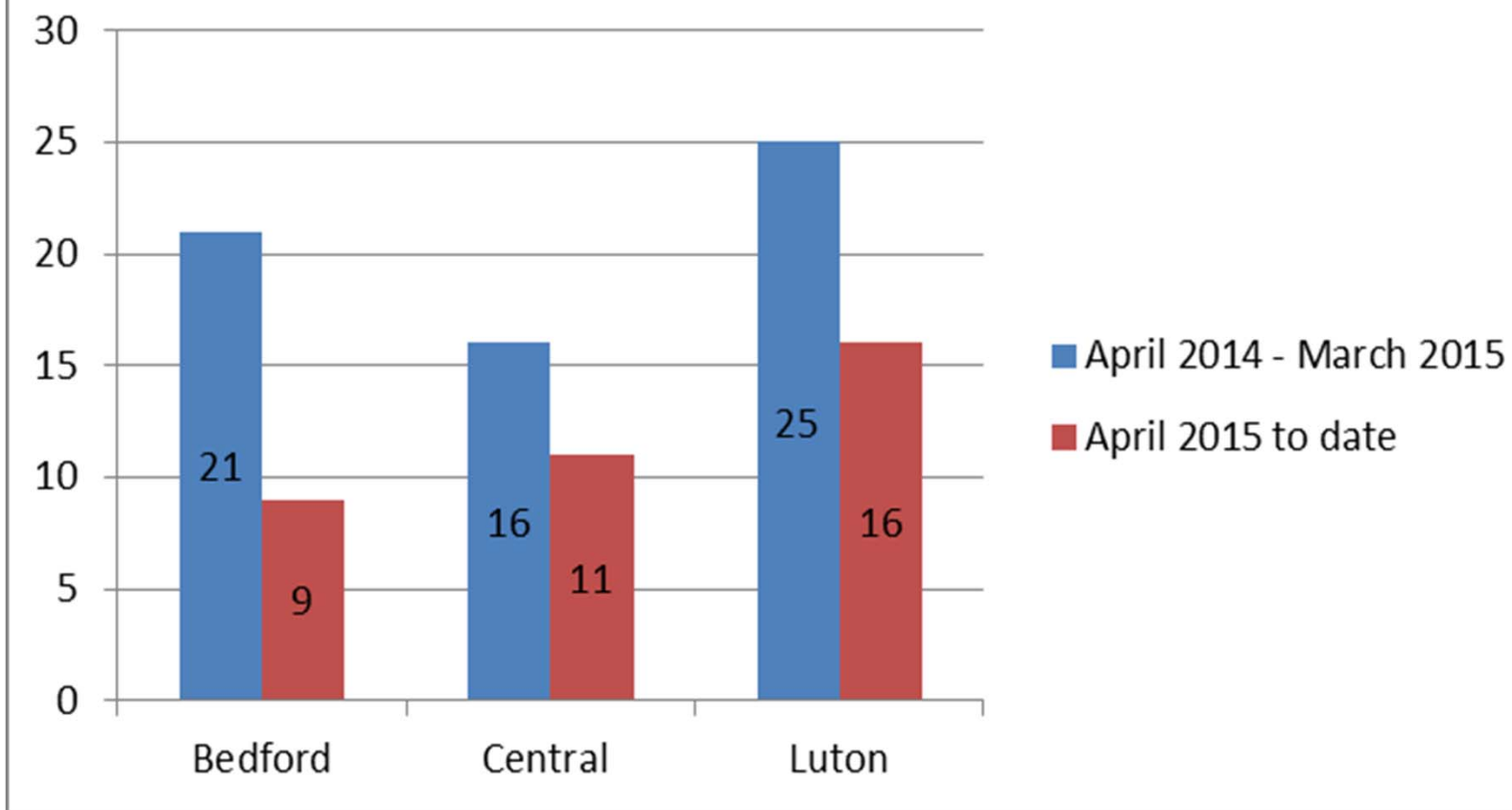
REFERRALS



DIAGNOSTIC ASSESSMENTS



CONFIRMED DIAGNOSIS



Clinical Activity

- 100% of accepted referrals seen for initial assessment within 10 weeks*
- Approx. 4 – 6 month wait currently between initial assessment and diagnostic clinic
- Since October 2015 have added clinic venue in Luton (Calnwood Court) to supplement Clapham & Dunstable venues
- All people diagnosed routinely offered follow-up appointment
- Signposting & referrals made to other services – including social needs and carer assessments
- 1:1 post-diagnostic therapy/support programmes tailored to individual need
- Therapy Group pilots – Psycho-education & Mindfulness (six sessions each)
- Training delivered to CMHTs – Central & Bedford

Looking Ahead

- Main priority for Service remains assessment & diagnostic work
- Service review (underway) - pathway/processes, staff skills mix, scope of provision, etc
- Clarifying pathways with Local Authorities & Mental Health services
- Further provision of therapy groups (as well as individualised support)
- Develop rolling programme of clinically focused training for Mental Health services for 2016-2017