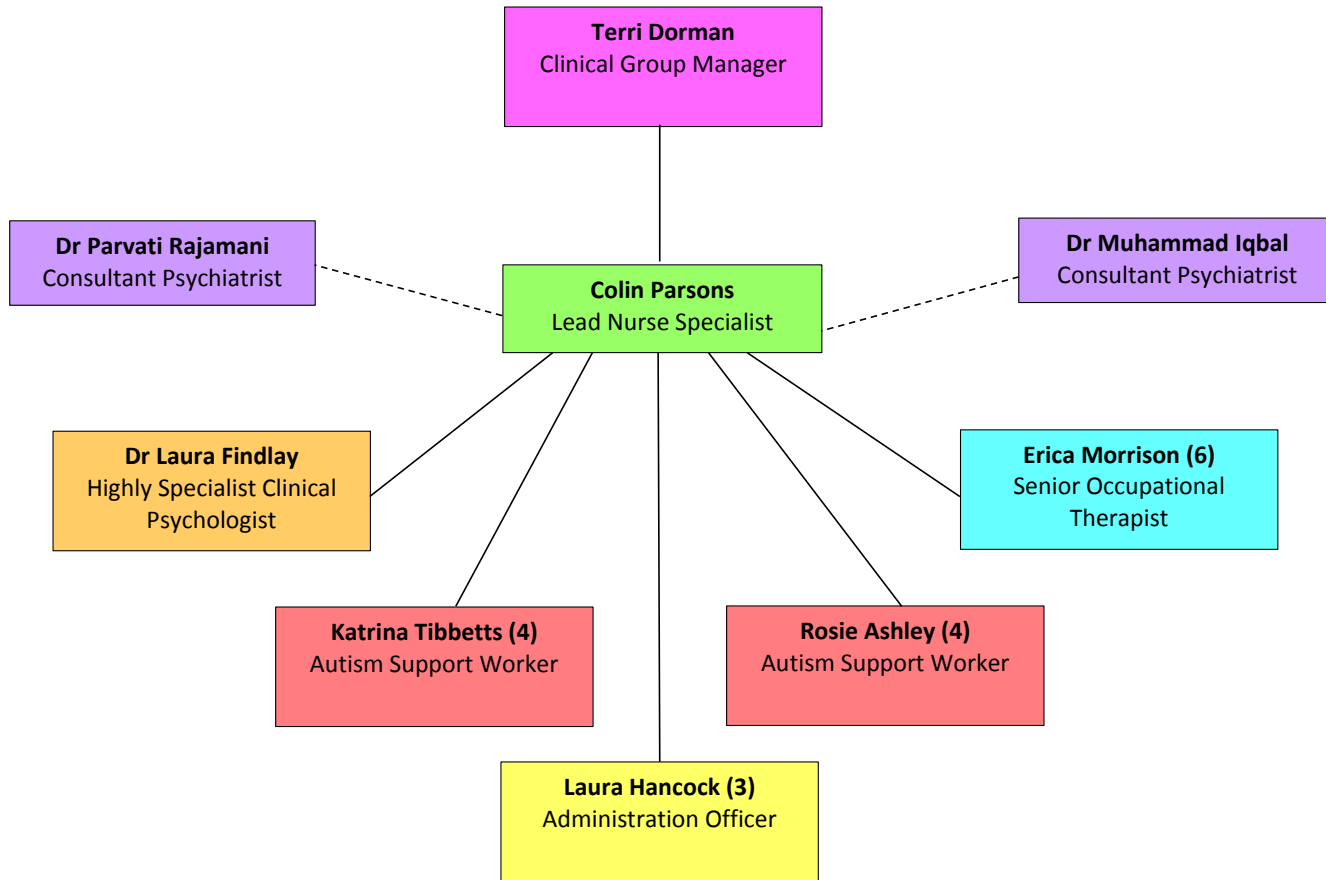


Adult Autism Service (AAS) Bedfordshire and Luton

The story so far.....

April 2015

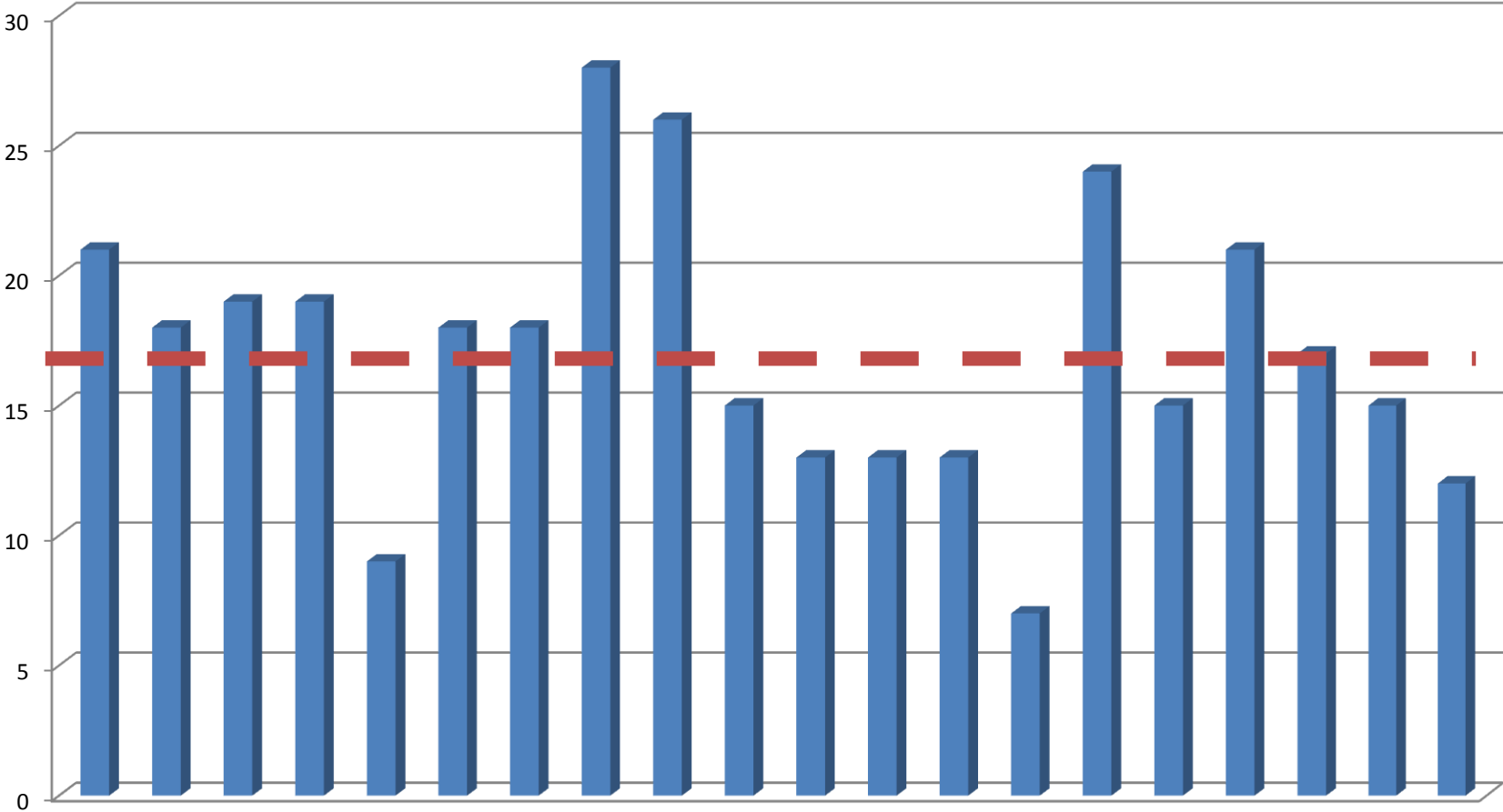
Meet the Team



—
- - -

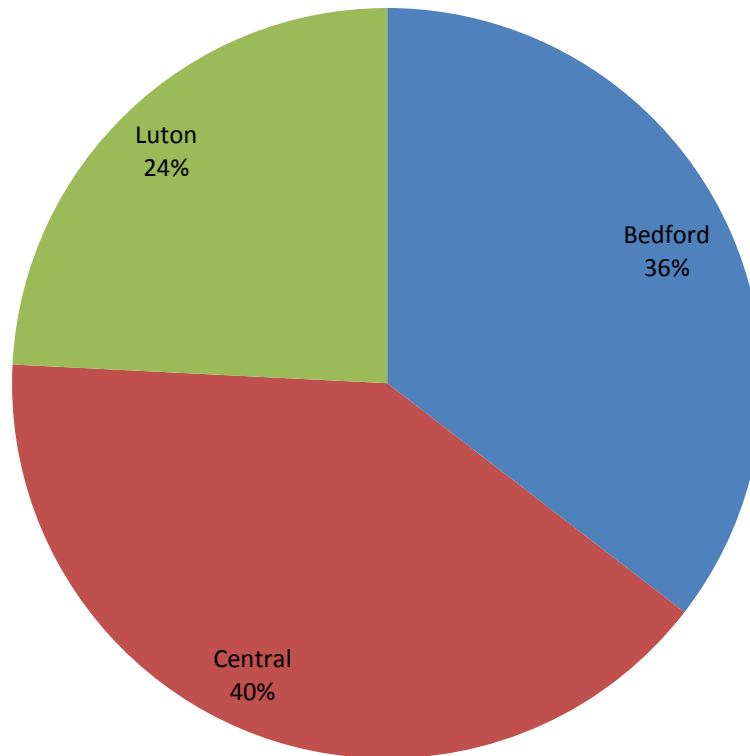
Referral Rate - Total

July 2013 – February 2015



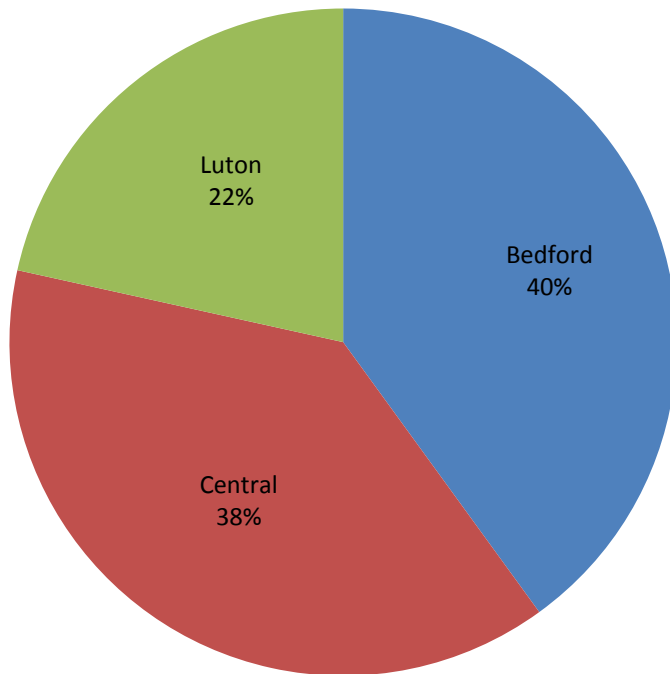
Referrals by Locality

July 2013 – February 2015

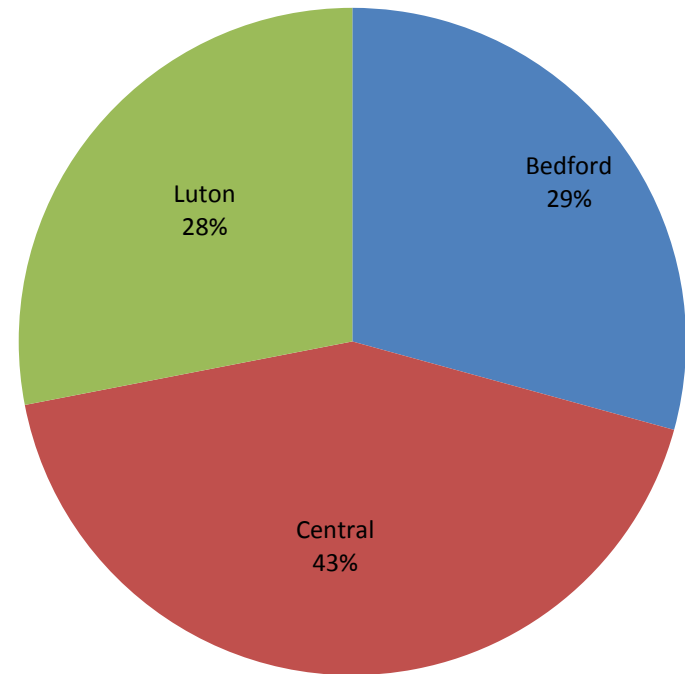


Diagnostic Assessments – Locality Comparison July 2013 – February 2015

Assessments completed

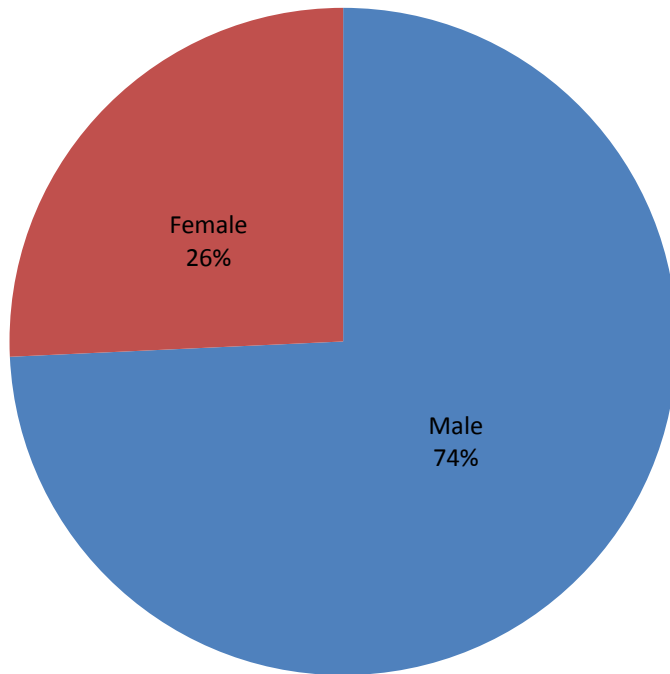


Diagnosis confirmed

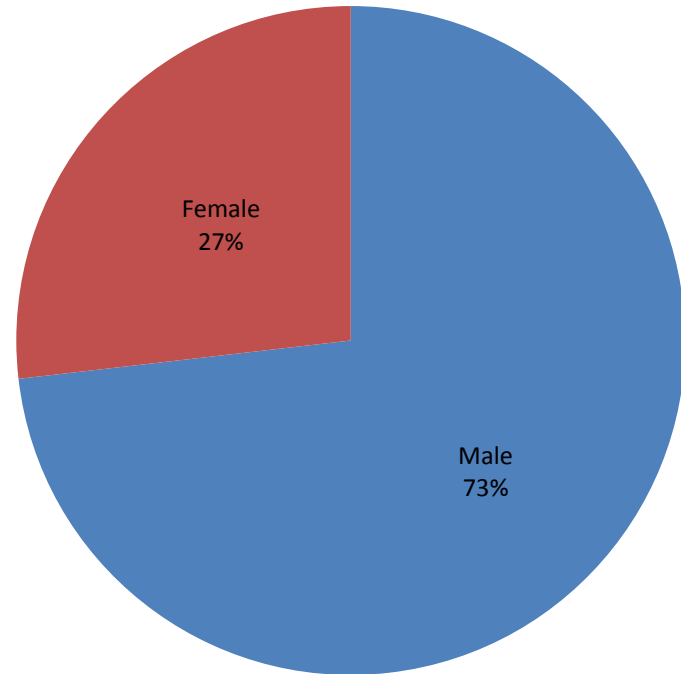


Gender Comparison

Assessments completed



Diagnosis confirmed



Looking Ahead – Service Development

- AAS joined East London NHS Foundation Trust effective 1st April 2015
- New statutory guidance
- Local 2015-18 Strategy
- Groups
- Specialist clinical training
- Update to next Partnership Board